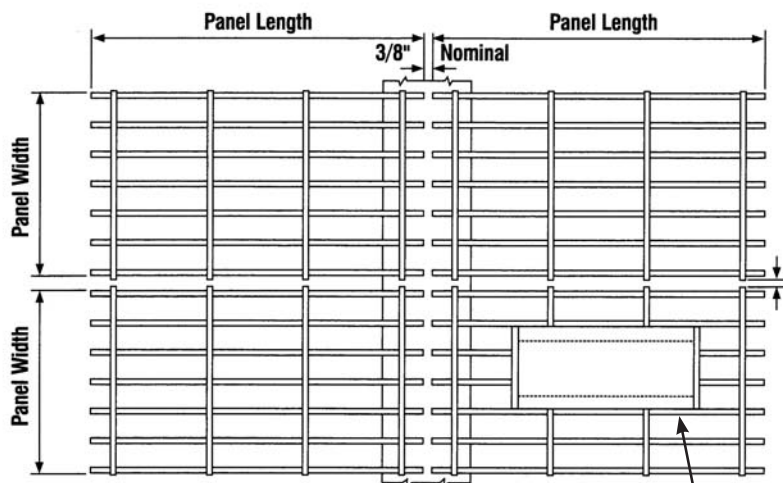


# Bar Grating Installation Clearances

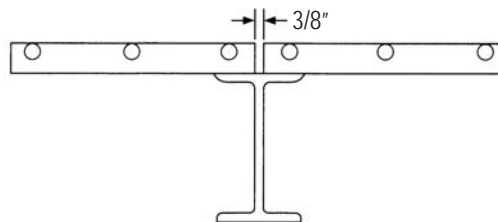
## PANEL TO PANEL CLEARANCES AND CUTOUT CLEARANCES



1/4" clearance\* between ends of cross bars or cross rods on rectangular grating or rivet heads on riveted grating. (3/8" clearance for heavy-duty grating).

..... Specified  
 \_\_\_\_\_ Actual

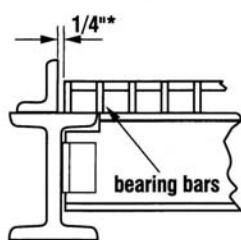
All panel width dimensions (including cutout) are given to the nearest bearing bar.



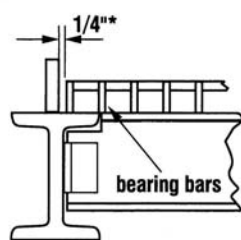
\*Cross rods may extend 1/8" from bearing bars.

All rectangular cutouts are made to the next bearing bar beyond the penetration with a clearance not to exceed bearing bar spacing.

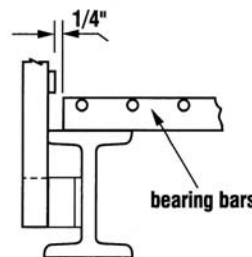
## SUPPORT CLEARANCES



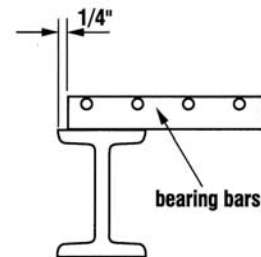
I-Beam and Angle Curb



I-Beam and Kickplate

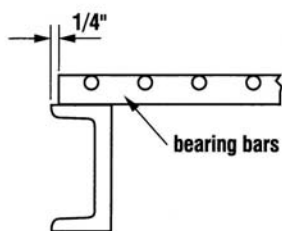


I-Beam and Handrail

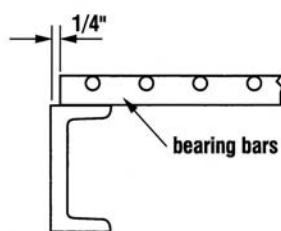


I-Beam

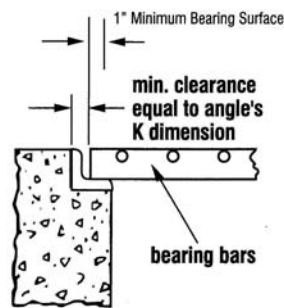
\*1/4" is recommended but dimension may vary due to bearing bar spacing. Dimension should not exceed bearing bar spacing.



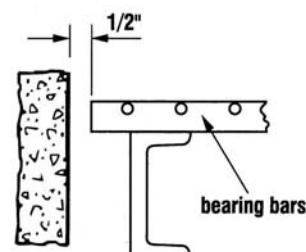
Channel Toed Out



Channel Toed In



Angle in Concrete



Concrete

