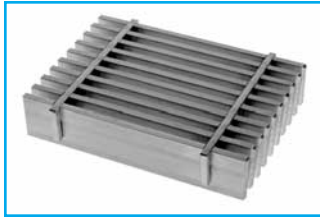


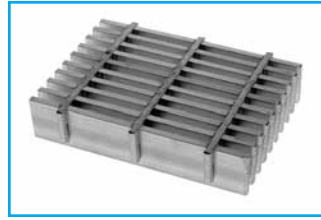
Aluminum Grating

PRESS-LOCKED CLOSE MESH

7/16" Center to Center of Bearing Bars



7-AP-4
Cross Bars 4" C/C



7-AP-2
Cross Bars 2" C/C

LOAD & DEFLECTION TABLE

Bar Size	Symbol	Approx. Weight psf	Sec. Mod Per Ft. Of Width	SPAN (Length of Bearing Bar)						
				2'-0"	2'-6"	3'-0"	3'-6"	4'-0"	4'-6"	5'-0"
3/4" x 1/8"	7-4-32	3.4	0.321	U 643	411	286	210	161		
	7-2-32	3.8		D 0.192	0.300	0.432	0.588	0.768		
3/4" x 3/16"	7-4-33	5.2	0.482	U 964	617	429	315	241	190	
	7-2-33	5.7		D 0.192	0.300	0.432	0.588	0.768	0.972	
1" x 1/8"	7-4-42	4.5	0.571	U 1143	731	508	373	286	226	183
	7-2-42	4.8		D 0.144	0.225	0.324	0.441	0.576	0.729	0.900
1" x 3/16"	7-4-43	6.7	0.857	U 1714	1097	762	560	429	339	274
	7-2-43	7.2		D 0.144	0.225	0.324	0.441	0.576	0.729	0.900
1-1/4" x 1/8"	7-4-52	5.6	0.893	U 1786	1143	794	583	446	353	286
	7-2-52	6.1		D 0.115	0.180	0.259	0.353	0.461	0.583	0.720
1-1/4" x 3/16"	7-4-53	8.4	1.339	U 2679	1714	1190	875	670	529	429
	7-2-53	9.1		D 0.115	0.180	0.259	0.353	0.461	0.583	0.720
1-1/2" x 1/8"	7-4-62	6.7	1.286	U 2571	1646	1143	840	643	508	411
	7-2-62	7.1		D 0.096	0.150	0.216	0.294	0.384	0.486	0.600
1-1/2" x 3/16"	7-4-63	10.0	1.929	U 3857	2469	1714	1259	964	762	617
	7-2-63	10.7		D 0.096	0.150	0.216	0.294	0.384	0.486	0.600
1-3/4" x 3/16"	7-4-73	11.5	2.625	U 5250	3360	2333	1714	1313	1037	840
	7-2-73	12.2		D 0.082	0.129	0.185	0.252	0.329	0.417	0.514
2" x 3/16"	7-4-83	13.1	3.429	U 6857	4389	3048	2239	1714	1354	1097
	7-2-83	13.8		D 0.072	0.113	0.162	0.221	0.288	0.365	0.450
2-1/4" x 3/16"	7-4-93	14.6	4.339	U 8679	5554	3857	2834	2170	1714	1389
	7-2-93	15.3		D 0.064	0.100	0.144	0.196	0.256	0.324	0.400
2-1/2" x 3/16"	7-4-103	16.2	5.357	U 10714	6857	4762	3499	2679	2116	1714
	7-2-103	16.9		D 0.058	0.090	0.130	0.176	0.230	0.292	0.360

U = safe uniform load, psf
 C = safe concentrated load, pfw
 D = deflection, inches
 E = modulus of elasticity, 10,000,000 psi
 F = fiber stress, 12,000 psi
Material: ASTM B-221, 6063 or 6061
Deflection: Spans and loads to the right of the bold line exceed 1/4" deflection for uniform load of 100 psf which provides safe pedestrian comfort. These can be exceeded for other types of loads with engineer's approval.

Serrated Bars: For serrated grating, the depth of grating required for a specified load is 1/4" deeper than that shown in the table.

General: Loads and deflections are theoretical and based on static loading.

Finish: Mill finish unless otherwise specified.

AP-7 PANEL WIDTH (inches)

Note: Includes 1/4" (1/8" each side) for extended cross bars on press-locked (AP).

No. of Bars	2	3	4	5	6	7	8	9	10	11	12	13	14	15	16	17	18	19	20	21	22	23	24	25	26	27	28	29
1/8" Bar	13/16	1 1/4	1 11/16	2 1/8	2 9/16	3	3 7/16	3 3/8	4 1/8	4 3/4	5 1/8	5 5/8	6 1/8	6 1/2	6 15/16	7 3/8	7 9/16	8 1/4	8 11/16	9 1/8	9 9/16	10	10 7/16	10 3/8	11 1/8	11 3/4	12 1/8	12 5/8
3/16" Bar	7/8	1 1/16	1 3/4	2 1/8	2 5/8	3 1/16	3 1/2	3 9/16	4 1/8	4 3/4	5 1/8	5 11/16	6 1/8	6 1/2	6 15/16	7 3/8	7 9/16	8 1/4	8 11/16	9 1/8	9 9/16	10 1/16	10 3/8	10 9/16	11 1/8	11 3/4	12 1/8	12 5/8
No. of Bars	30	31	32	33	34	35	36	37	38	39	40	41	42	43	44	45	46	47	48	49	50	51	52	53	54	55	56	57
1/8" Bar	13 1/16	13 1/2	13 5/8	14 1/8	14 3/4	15 1/4	15 11/16	16 1/8	16 3/4	17	17 1/8	17 5/8	18 1/8	18 3/4	19 1/8	19 5/8	20 1/16	20 1/2	20 5/8	21 1/8	21 1/2	21 5/8	22 1/4	22 11/16	23 1/8	23 5/8	24 1/4	24 7/8
3/16" Bar	13 3/8	13 9/16	14	14 7/16	14 3/4	15 1/8	15 5/8	16 1/16	16 3/8	17 1/16	17 1/2	17 5/8	18 3/8	18 3/4	19 1/16	19 1/2	20 1/8	20 1/4	21	21 1/16	21 1/2	22 1/16	22 3/4	23 1/8	23 5/8	24 1/16	24 1/2	24 5/8
No. of Bars	58	59	60	61	62	63	64	65	66	67	68	69	70	71	72	73	74	75	76	77	78	79	80	81	82	83		
1/8" Bar	25 5/16	25 3/4	26 3/16	26 5/8	27 1/16	27 1/2	27 5/8	28 3/8	28 3/4	29 1/4	29 11/16	30 1/8	30 3/4	31	31 1/16	31 1/2	32 1/8	32 1/4	33 1/16	33 1/2	34 1/8	34 1/2	34 5/8	35 3/8	35 3/4	36 1/4		
3/16" Bar	25 5/8	25 9/16	26 1/4	26 11/16	27 1/8	27 1/4	28	28 1/8	28 3/4	29 1/8	29 3/4	30 1/8	30 3/4	31 1/8	31 1/2	31 5/8	32 1/8	32 1/4	33 1/4	33 1/8	34 1/8	34 1/4	35	35 1/8	35 3/4	36 1/4		